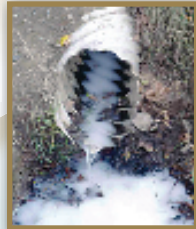


### Examples of what you should report:



Gas and oil entering a storm drain



Soap suds exiting a storm drain pipe



Abandoned cans of paint



Any obstruction to a storm drain

### Report Illicit Discharges

As a County employee, it is your responsibility to report any illicit discharges or connections you may encounter in your duties.

### Information to Report:

- Location/address of the problem
- Quantity, origin, color, and odor of the substance
- Vehicle license number or individuals involved in the discharge/dumping

**To report storm water pollution or illicit discharges, call Project Clean Water at 568-3440 or 1-877-OUR-OCEAN.**

**In case of emergency (such as a large gasoline or chemical spill), contact the County Police or Fire Department at 911.**



[www.sbprojectcleanwater.org](http://www.sbprojectcleanwater.org)

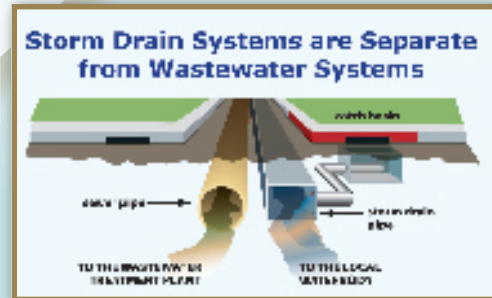
### Recognizing and Reporting

# STORMWATER POLLUTION



**County of Santa Barbara  
Public Works Department  
Water Resources Division  
568-3440 or 1-877-OUR-OCEAN**

The County of Santa Barbara is committed to detecting and eliminating illicit discharges and connections to the storm sewer system in accordance with the State municipal storm water general permit. An illicit discharge is the release of any substance other than rain water into the storm sewer system.



The following are common pollution sources:

### Residential

- Yard waste and trash
- Laundry wastewater
- Sewer wastewater
- Home improvement waste (concrete, mortar, and paint)
- Vehicle by-products
- Pet waste



Yard waste obstructing a storm drain

### Creekside

- Trash
- RV sewer dumping
- Greenwaste disposal
- Human waste

### Construction

- Sediment from soil erosion
- Construction waste (paint, solvents, and drywall)
- Overspray from water tenders for dust control
- Sidewalk and street washdown water



Illicit discharge of sediment to storm drain system

### Commercial/Industrial

- Hoses, PVC pipes, or connections discharging directly into a catch basin, storm drain, channel, or culvert

- Accumulated trash and debris
- Improperly stored products (waste oil, paint)
- Leaky vehicles or equipment
- Exposed trash storage/disposal



Abandoned 55-gallon drums containing unknown wastes exposed to rainwater

### Restaurant

- Restaurant food waste
- Cooking fats, oils, and grease
- Mop wash water
- Leaking dumpsters